

# SUSPECTED CHILD PHYSICAL ABUSE



What to do when physical abuse is suspected in a child under 3 years old.

Determine if forensic evidence will be collected prior to cleansing and removal of clothing.

Contact Social Work for all cases.

## 1 HISTORY

Take detailed history

Review available prior medical records (PCP, ED, Inpatient)

Review prior radiologic exams at referring hospitals

Review prior photographs

## 2 PHYSICAL

Growth parameters

Inspection of all body parts and thorough skin exam

Palpation of extremities and ribs for crepitus or deformities

Complete neurological exam

Oral exam with attention to lips, tongue, buccal mucosa, frenula, palate, and teeth

Ear exam, scalp and hair

Genitalia examination



## 3 CONSULTS

Hospital Social Work

Pediatric Ophthalmologist; ask for photos of retina

Medical Photography, even if CPS or Law Enforcement take photos

Request a radiology reading and upload images of outside films

SANE (Sexual Assault Nurse Examiner) if sexual abuse <96 hours prior to presentation

Consider neurosurgery, ortho, ENT

## 4 DIAGNOSTIC TESTS

Consider:

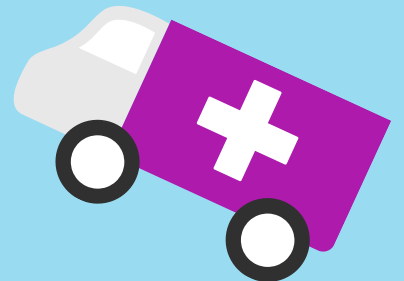
CBC with platelets, LFTs, Amylase/Lipase, PT/PTT, UA and stool guaiac

UDS/Toxicology

Skeletal survey with oblique view of ribs

Brain imaging (CT acutely; MRI for follow up)

Forensic evidence kit per SANE consult



## 5 PHOTOGRAPHY

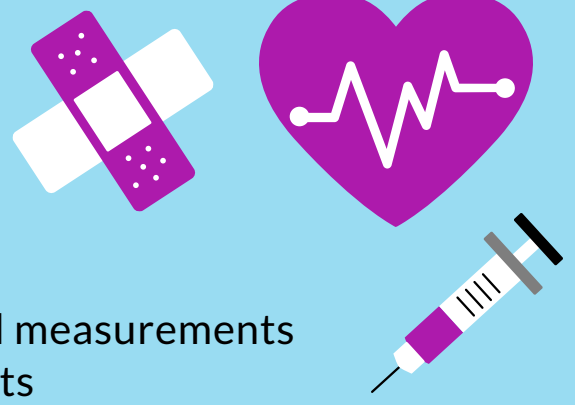
Call Medical Photography for photos, if available

Follow photographic documentation guidelines found at [www.champprogram.com](http://www.champprogram.com), Practice Recommendations, or scan QR code:



6

## DOCUMENTATION



History obtained from whom  
 Physical findings with drawings and measurements  
 Tests ordered/performed and results  
 Impression: suspected physical abuse  
**DO NOT ATTEMPT TO FURTHER INTERPRET FINDINGS IF UNCERTAIN**

Write impact statement and make available to Social Work, CPS, or police.

For more information and impact statement guidelines, visit [www.CHAMPPProgram.com](http://www.CHAMPPProgram.com), Resources for Professionals, or scan QR code:



7

## SIBLINGS/PEDIATRIC CONTACTS

Inform CPS that all siblings and other pediatric household contacts must be referred to PCP, ED, or a Child Abuse Clinic:

- ED-Acute Issues
- PCP-Over 3 years of Age
- Child Abuse Clinic-Under 3 years of Age

8

## REPORTING

If in NYS, CALL NYS MANDATED REPORTER HOTLINE 1-800-342-3720 TO MAKE A REPORT.

Ask for a scene investigation, if necessary  
 Complete and sign child abuse reporting form LDSS-2221A  
 To access form, visit NYS Office of Children and Family Services website: [ocfs.ny.gov](http://ocfs.ny.gov) or scan QR Code:



**AS A LICENSED PROFESSIONAL, YOU ARE REQUIRED TO REPORT CHILD ABUSE. A REFERRAL TO A CHILD ABUSE EXPERT IS NOT THE SAME AS A HOTLINE REPORT TO NYS CENTRAL REGISTER OF CHILD ABUSE AND MALTREATMENT.**

9

## AT DISCHARGE

Document head circumference and other growth parameters  
 Make appointments with PCP and other specialists, if applicable

